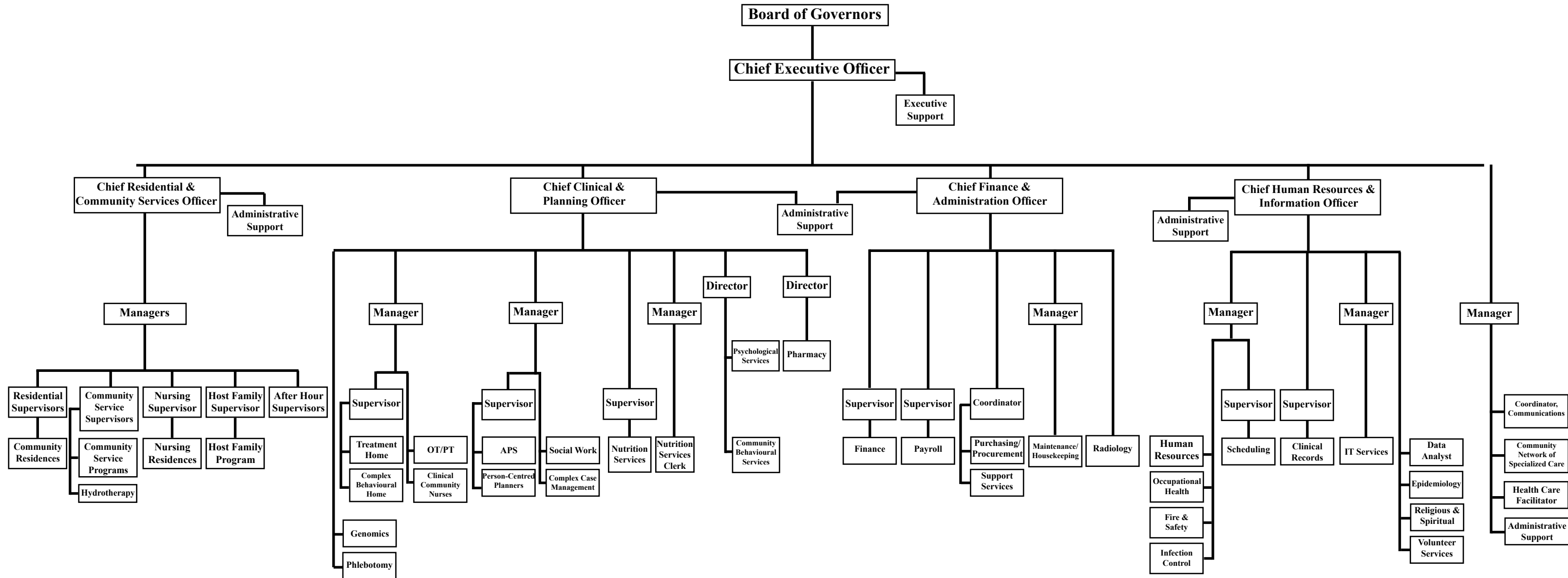
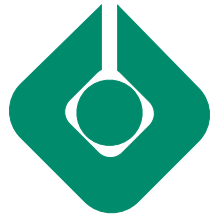


Ongwanada

# Ongwanada Organizational Chart

To see reporting structure of each branch with names, click titles below.

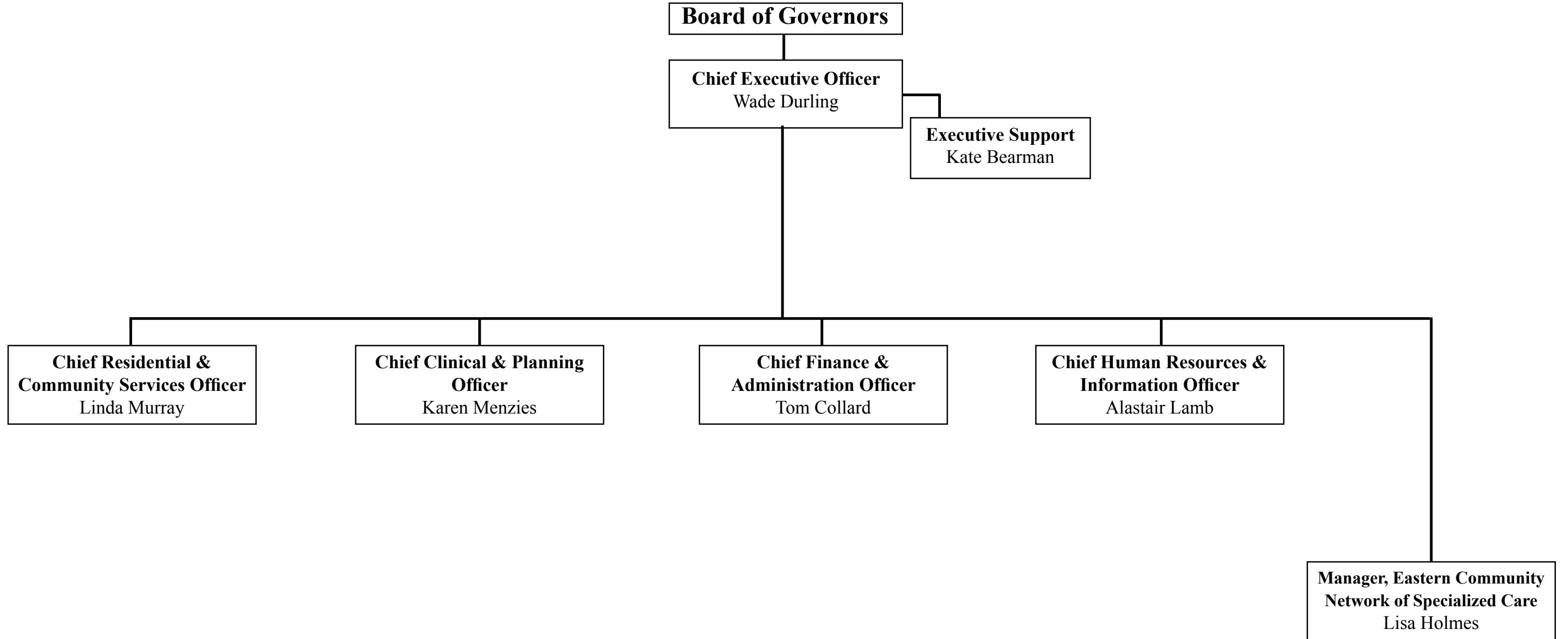




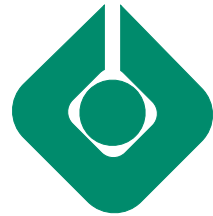
Ongwanada

## Reporting Structure to Chief Executive Officer

Click on names to see reporting line of each branch below.

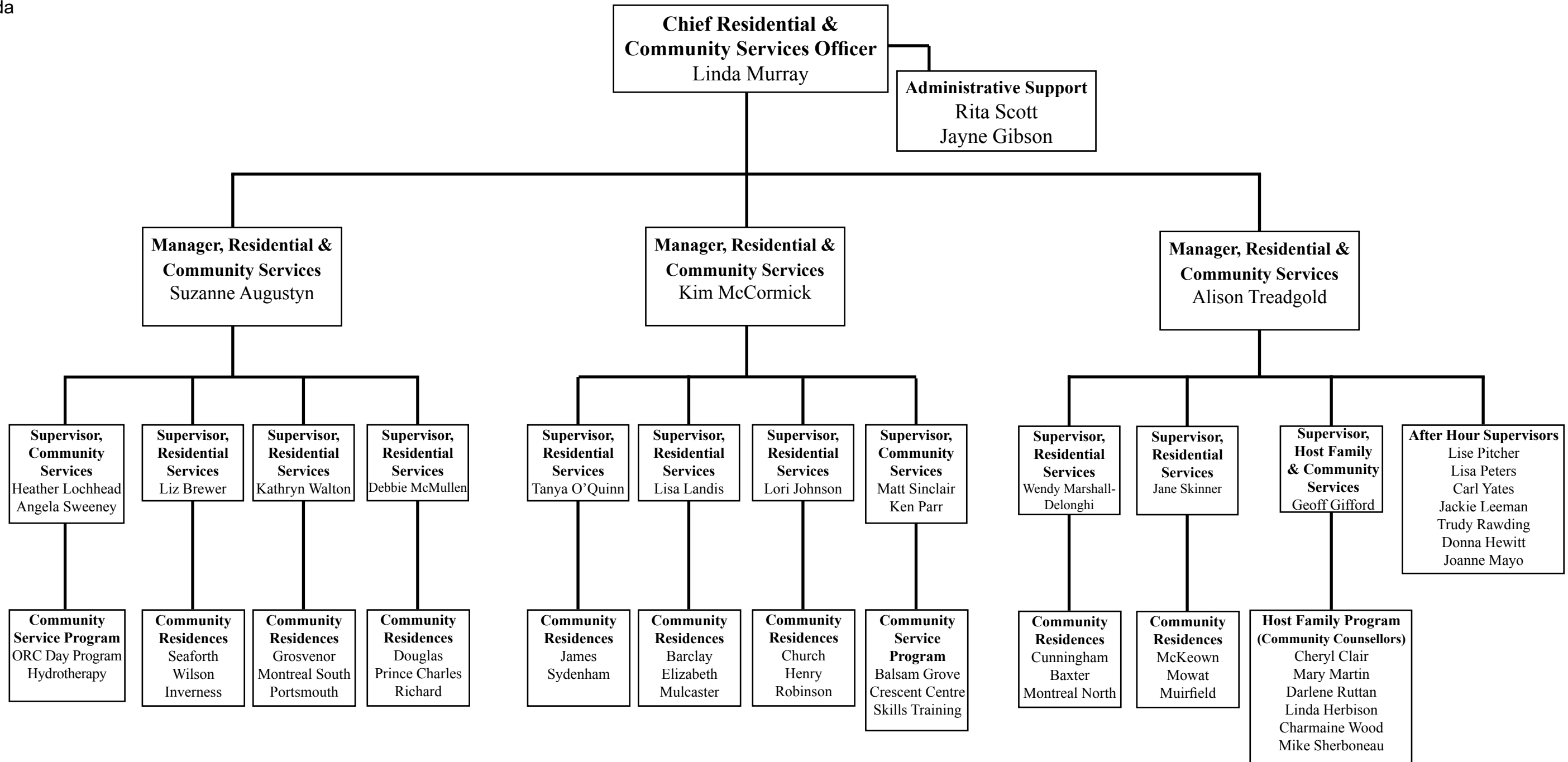


*[Back to full organizational chart](#)*

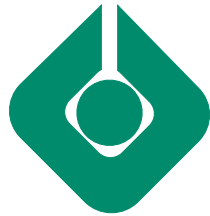


Ongwanada

# Reporting Structure to Chief Residential & Community Services Officer



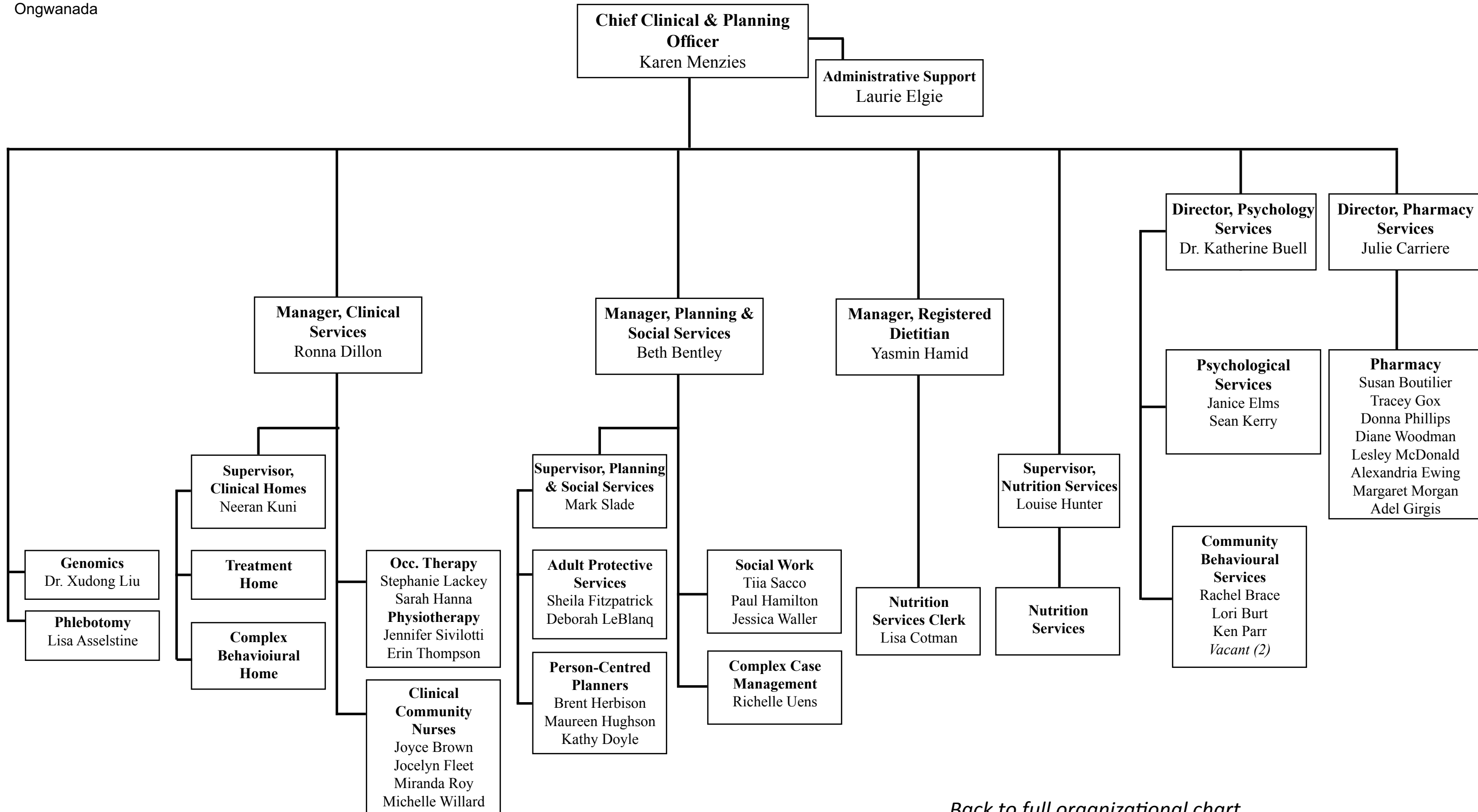
*Back to full organizational chart*



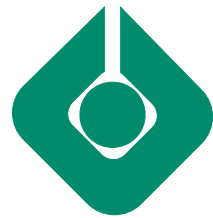
Ongwanada

# Reporting Structure to Chief Clinical & Planning Officer

Click on department and/or names to view contact information.

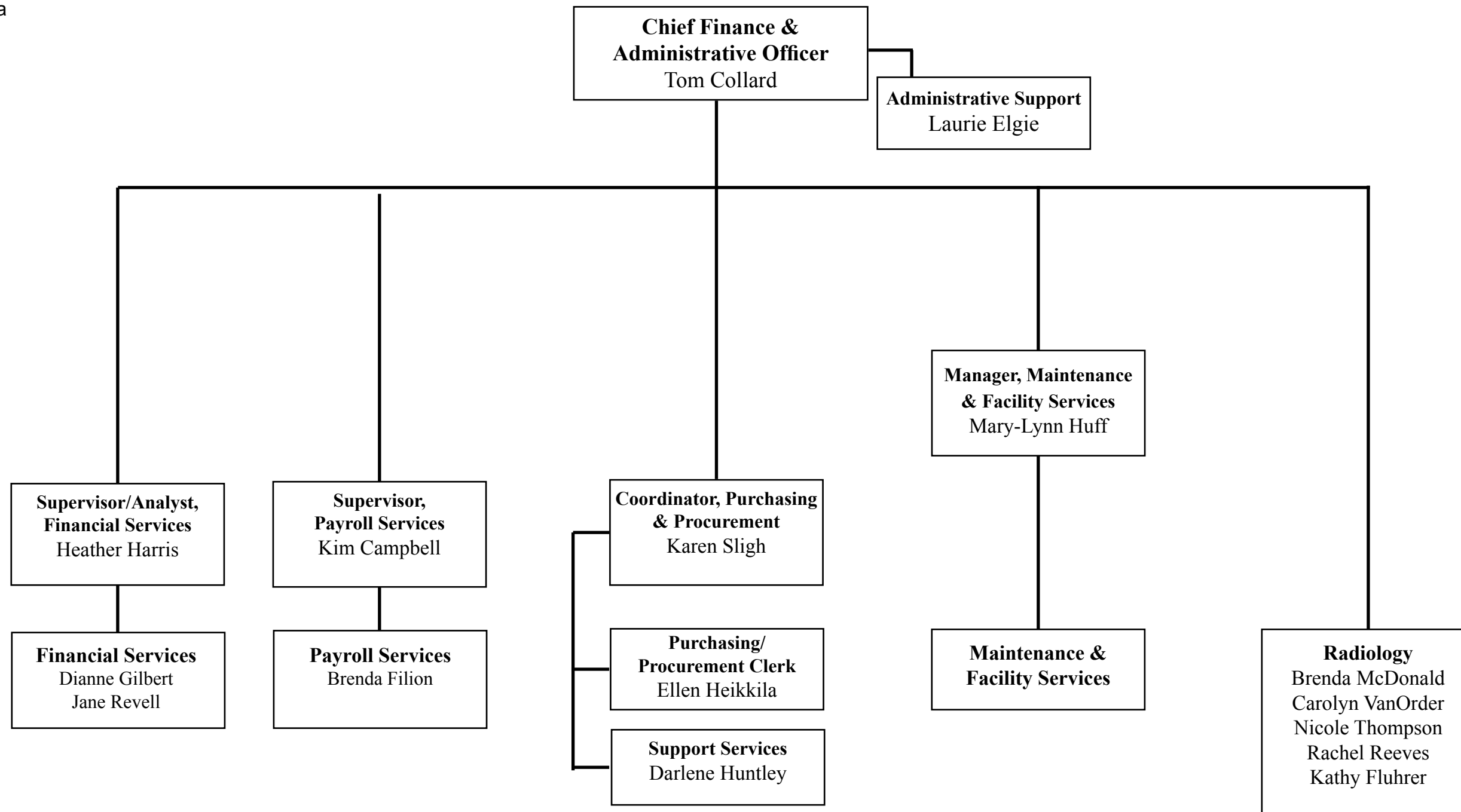


[Back to full organizational chart](#)

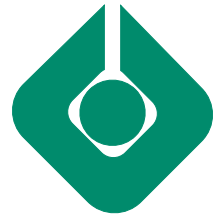


Ongwanada

## Reporting Structure to Chief Finance & Administrative Officer



*Back to full organizational chart*



Ongwanada

# Reporting Structure to Chief Human Resources & Information Officer

**Chief Human Resources & Information Officer**  
Alastair Lamb

**Administrative Support**  
Sophie Chalk

**Manager, Human Resources**  
Cindy Chappell

**Manager, Information Systems**  
Tom Walker

**Supervisor, Staff Schedule**  
Jason Hanmore

**Supervisor, Clinical Records**  
Shelley Gelineau

**Human Resources Generalist**  
Bev Prairie  
Matt Fodey  
Jennifer Marvin

**Occupational Health Nurse**  
Carleen Arthurs

**Fire & Safety**  
Peter Gould  
Louise Hunter

**Infection Control**  
Debbie Moulton

**Staffing Clerks**  
Karen Drew  
Jill Moore  
Leah Cox  
Craig Campbell  
Sara Manol

**Clinical Records**  
Yvette Roy  
Amy Wartman  
Brooke Van Guyze

**Helpdesk/ Tech Specialist**  
Malcolm Cox

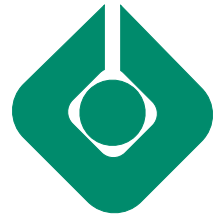
**Data Analyst**  
Martha Martin

**Epidemiology**  
Helene Ouellette-Kuntz

**Spiritual Care**  
Monika Cook

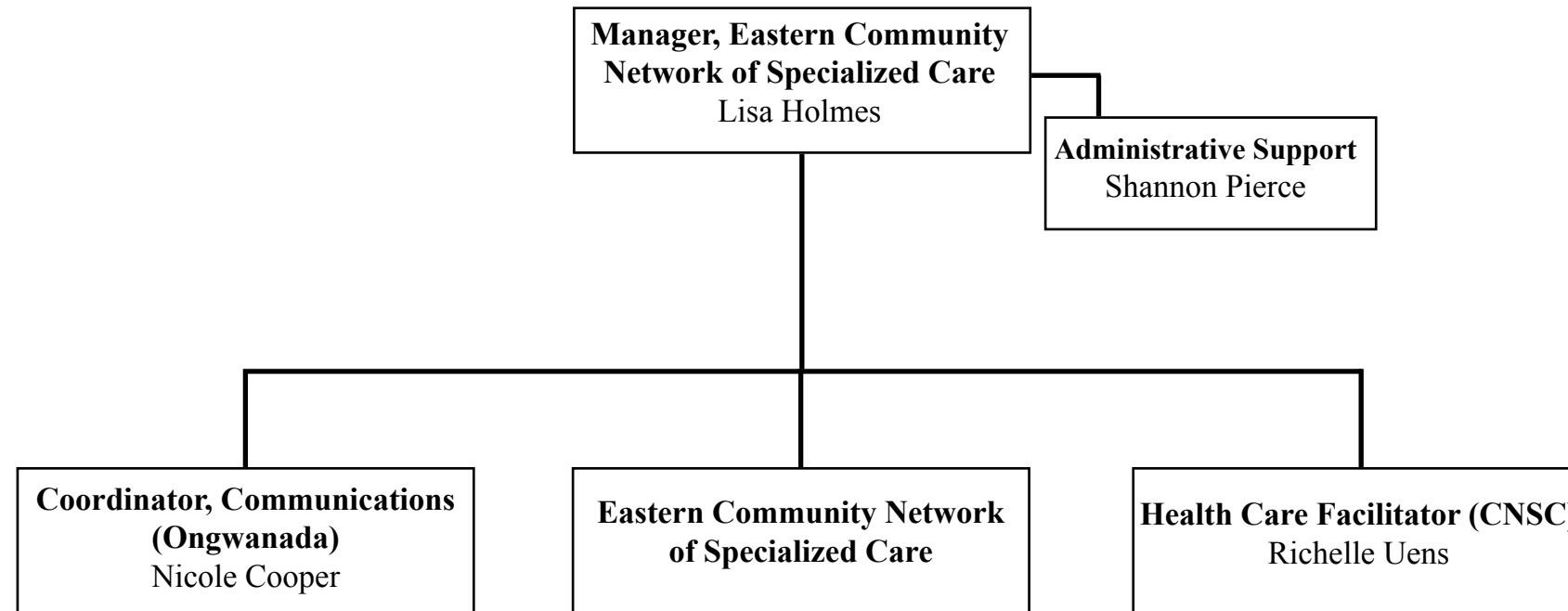
**Volunteer Services**  
Paula Smith

*Back to full organizational chart*



Ongwanada

## Reporting Structure to Manager, Eastern Community Network of Specialized Care



*Back to full organizational chart*



Ongwanada

## Board of Governors

Allan Twohey, President

Jack Thompson, 1<sup>st</sup> Vice President

Roy Smith, 2<sup>nd</sup> Vice President

Michael Dominik, Treasurer

Wade Durling, Secretary

Janice Spencer

Dwight Boyce

Jim Macniven

Randy Casford

Leanne Hunt

Tom Lodge

Sandra Vellone

David Ariss

Dr. Muhammad Ayub

Carol Cartier

Dr. Bruce McCreary

Geoff McMullen

*Back to full organizational chart*