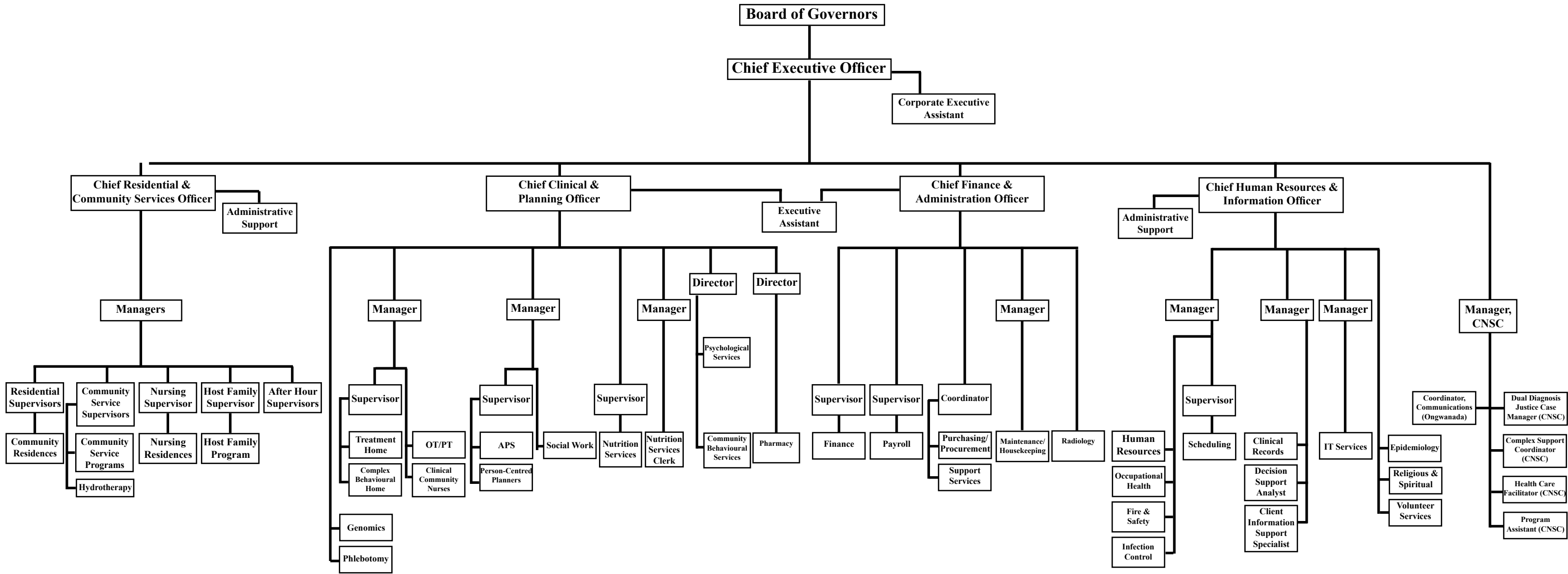


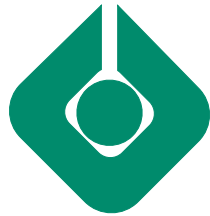
Ongwanada

# Ongwanada Organizational Chart

Click on names to see reporting line of each branch below.

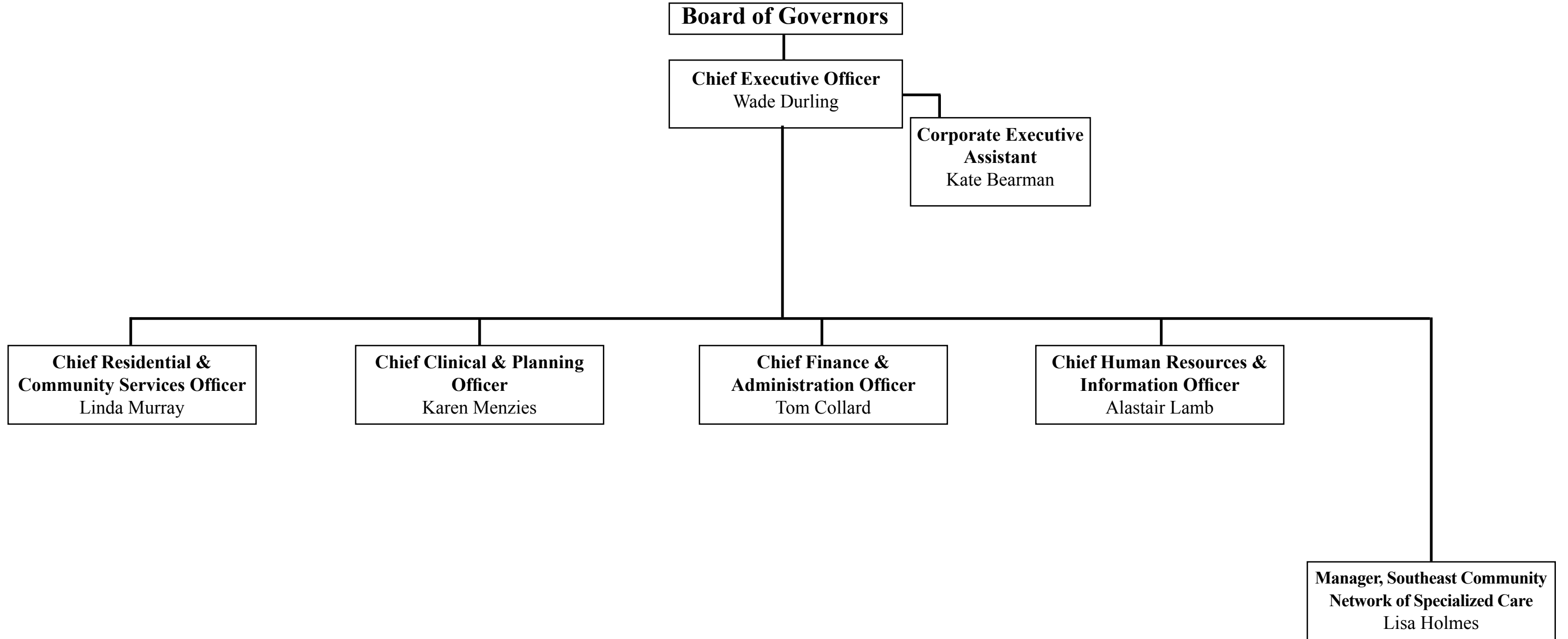
(as of August 28, 2017)



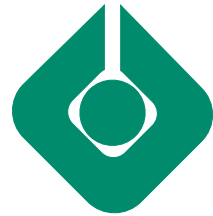


Ongwanada

## Reporting Structure to Chief Executive Officer

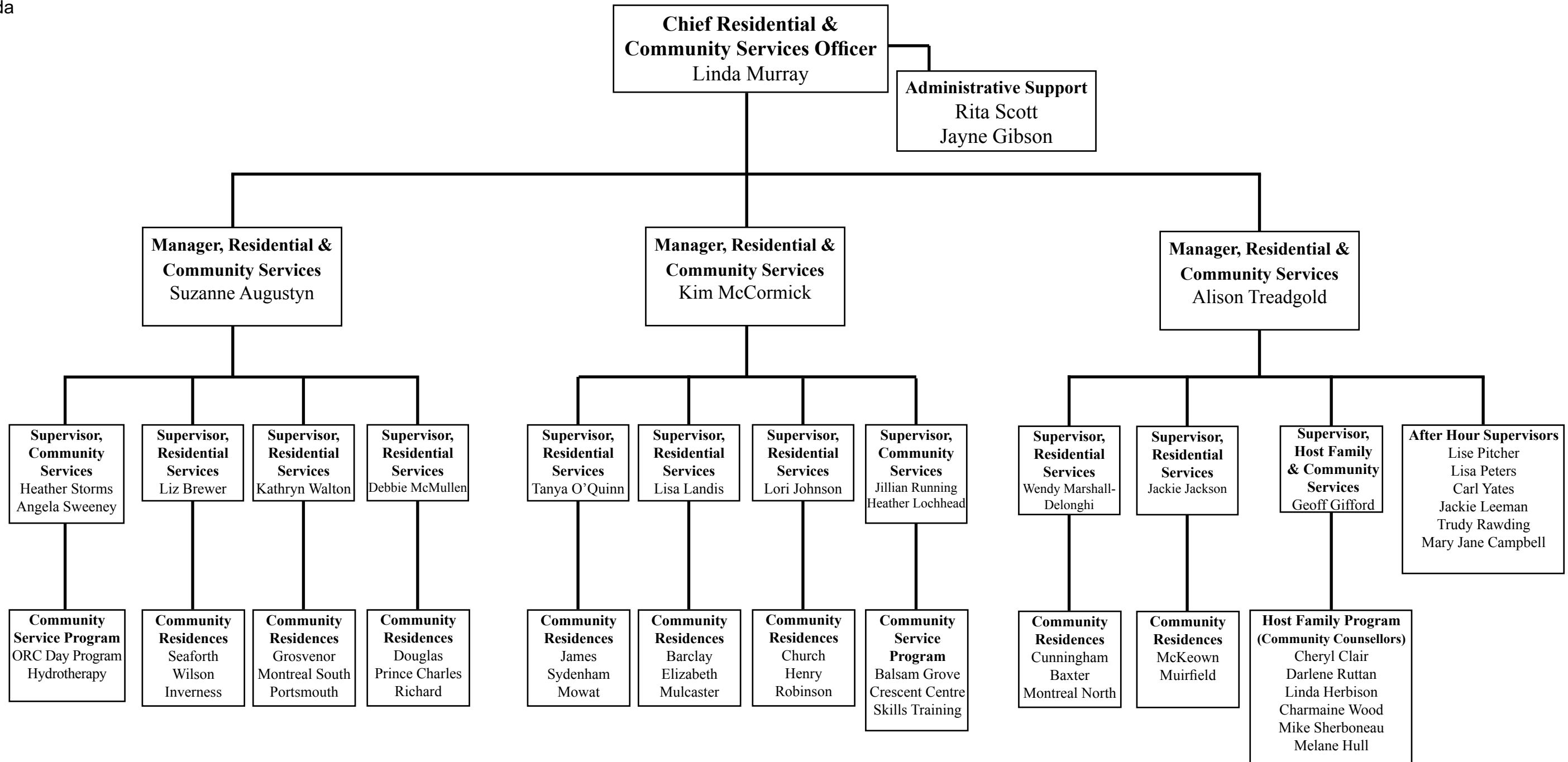


*Back to full organizational chart*

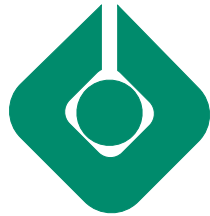


Ongwanada

# Reporting Structure to Chief Residential & Community Services Officer



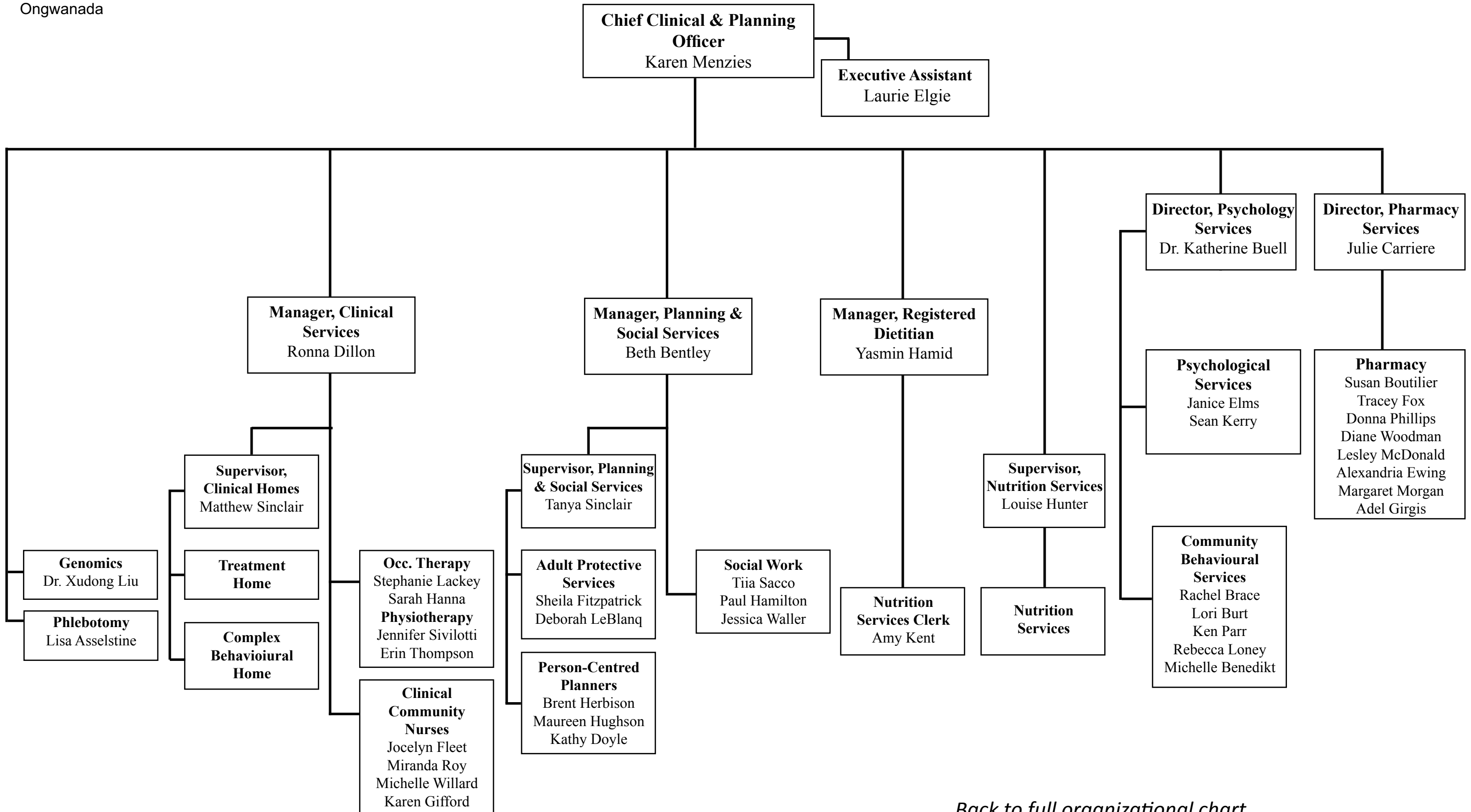
*Back to full organizational chart*



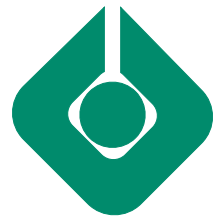
Ongwanada

# Reporting Structure to Chief Clinical & Planning Officer

Click on department and/or names to view contact information.

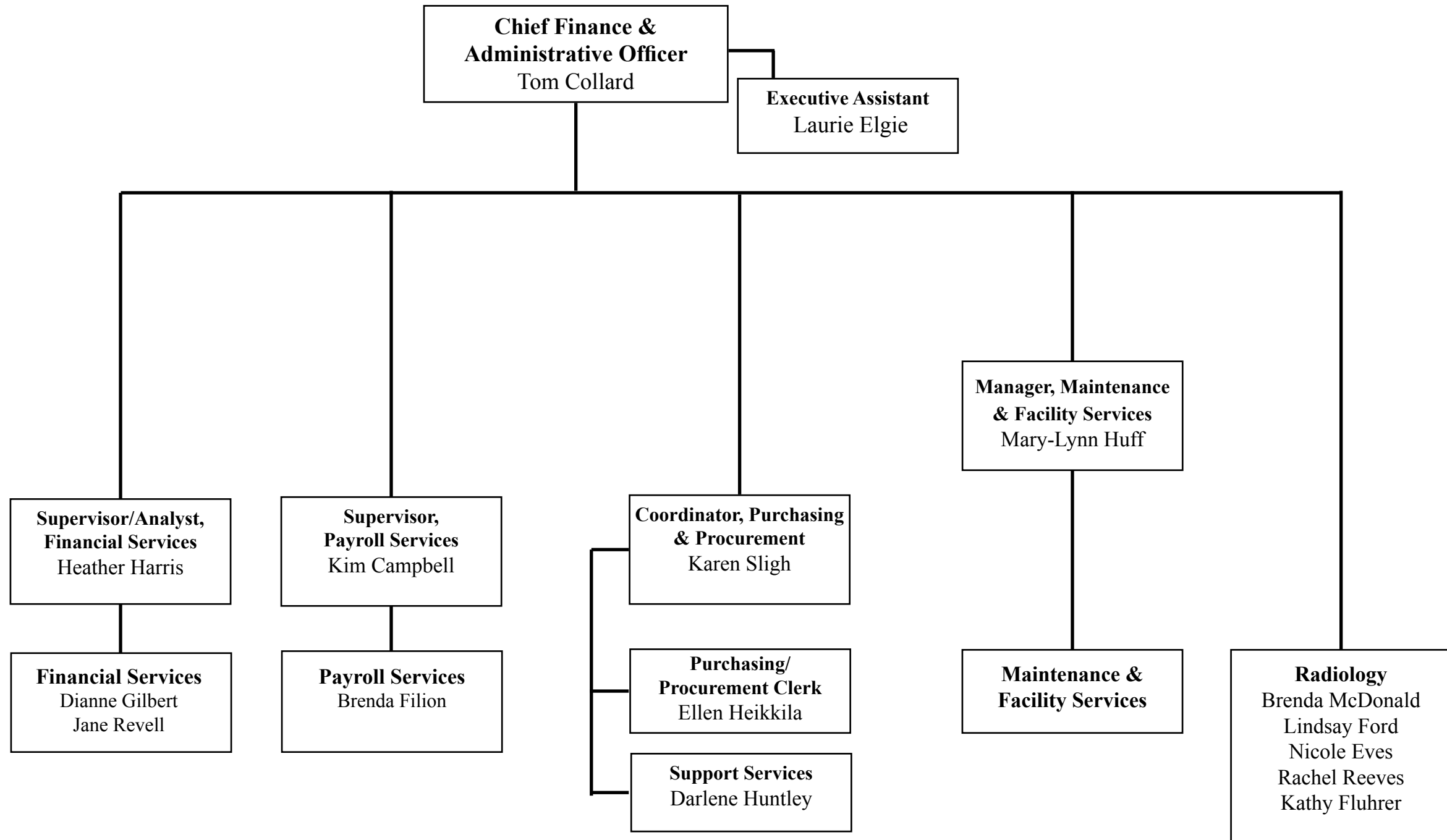


*[Back to full organizational chart](#)*

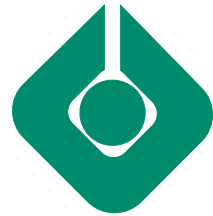


Ongwanada

## Reporting Structure to Chief Finance & Administrative Officer

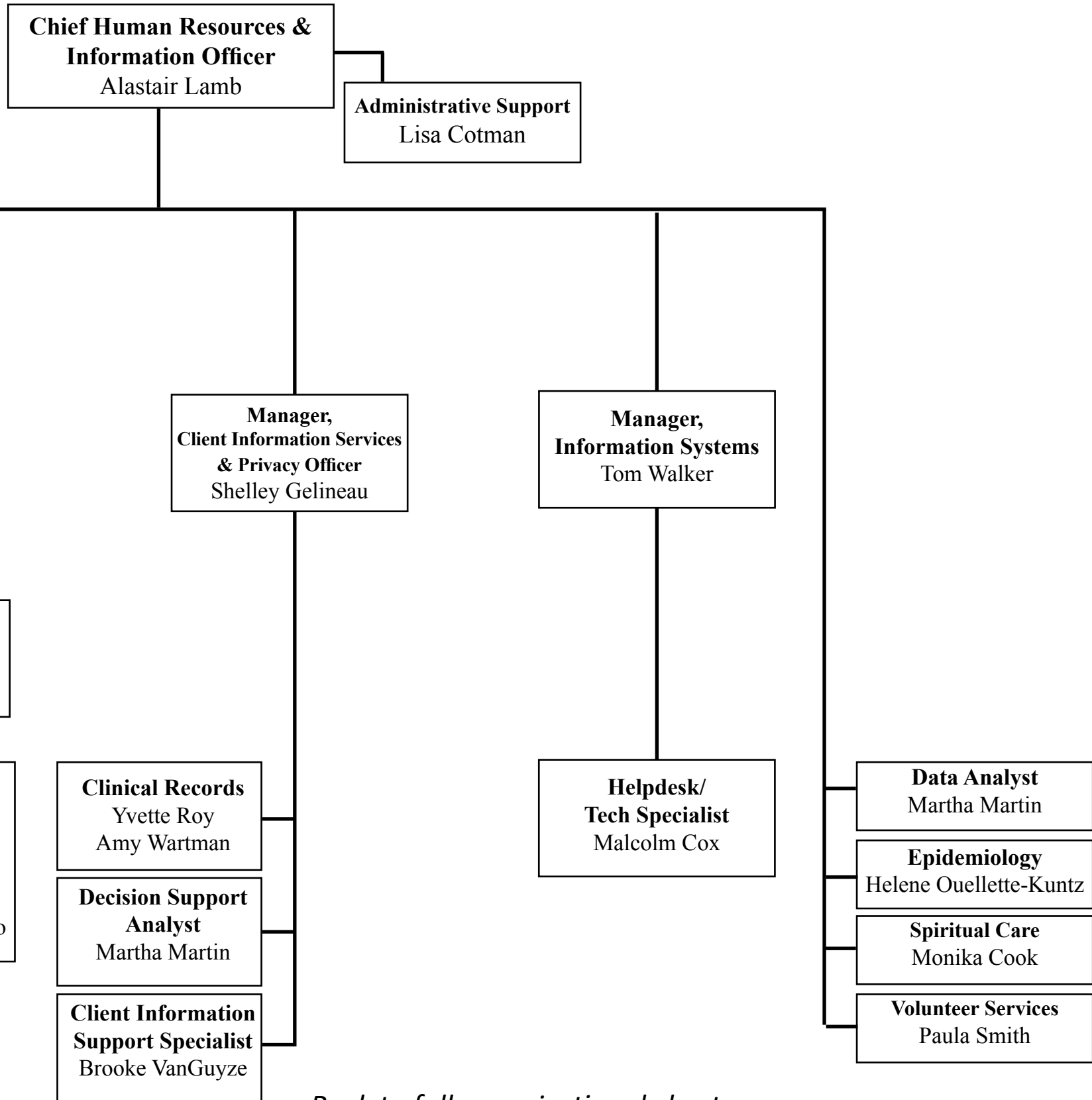


*Back to full organizational chart*

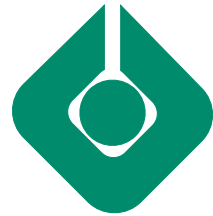


Ongwanada

# Reporting Structure to Chief Human Resources & Information Officer

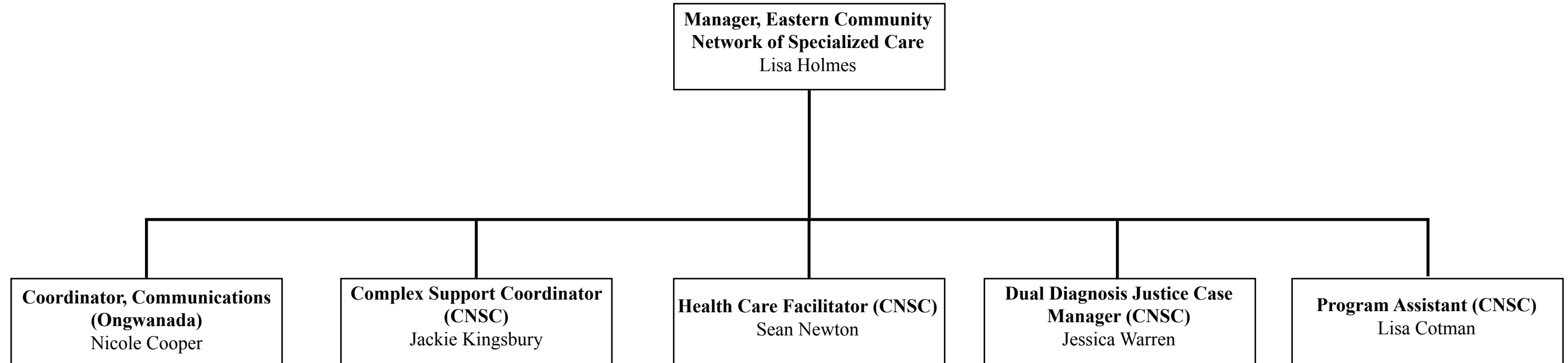


*Back to full organizational chart*



Ongwanada

## Reporting Structure to Manager, Eastern Community Network of Specialized Care



*[Back to full organizational chart](#)*



Ongwanada

## Board of Governors

Jack Thompson, President

Roy Smith, Vice President

Allan Twohey, Past President

Michael Dominik, Treasurer

Wade Durling, Secretary

Janice Spencer

Dwight Boyce

Randy Casford

Leanne Hunt

Tom Lodge

Sandra Vellone

David Ariss

Dr. Muhammad Ayub

Carol Cartier

Geoff McMullen

*[Back to full organizational chart](#)*