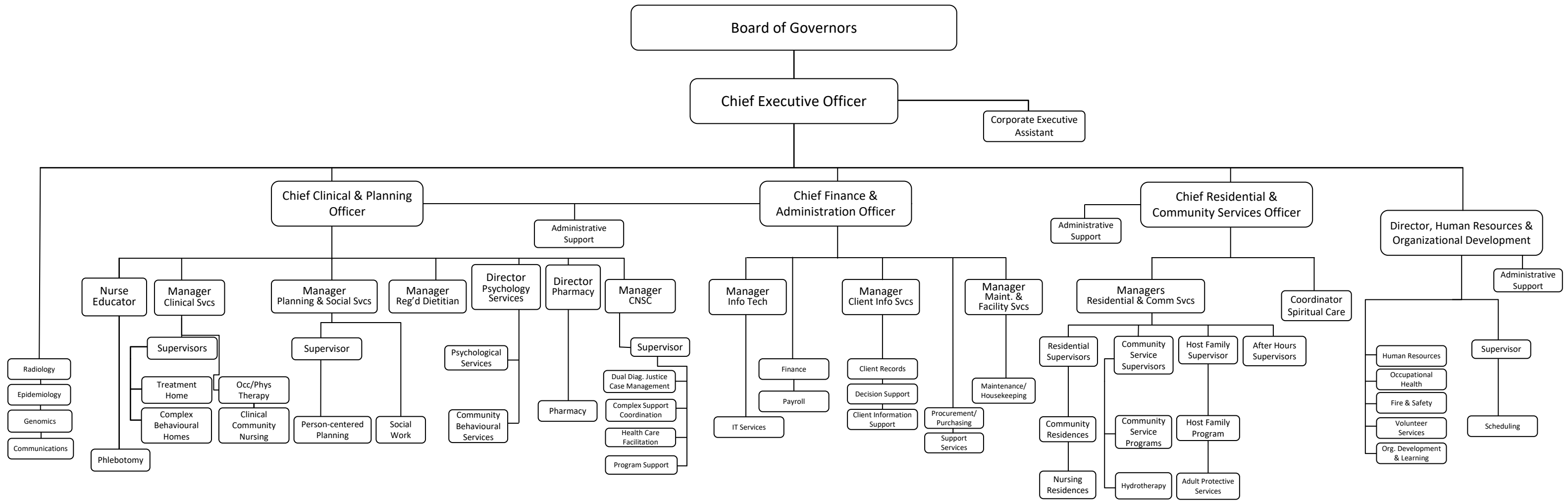




Ongwanada Organizational Chart

Click on names to see reporting line of each branch below
As of October 22, 2020

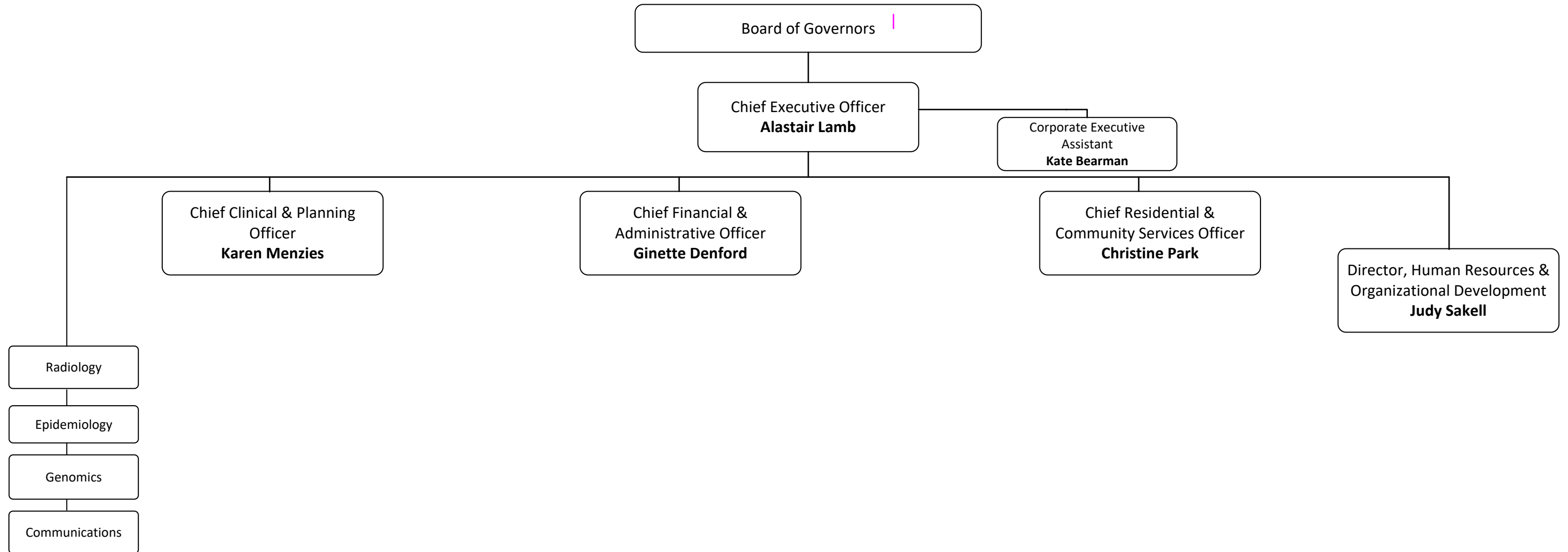




Ongwanada Organizational Chart

Reporting Structure to the Chief Executive Officer

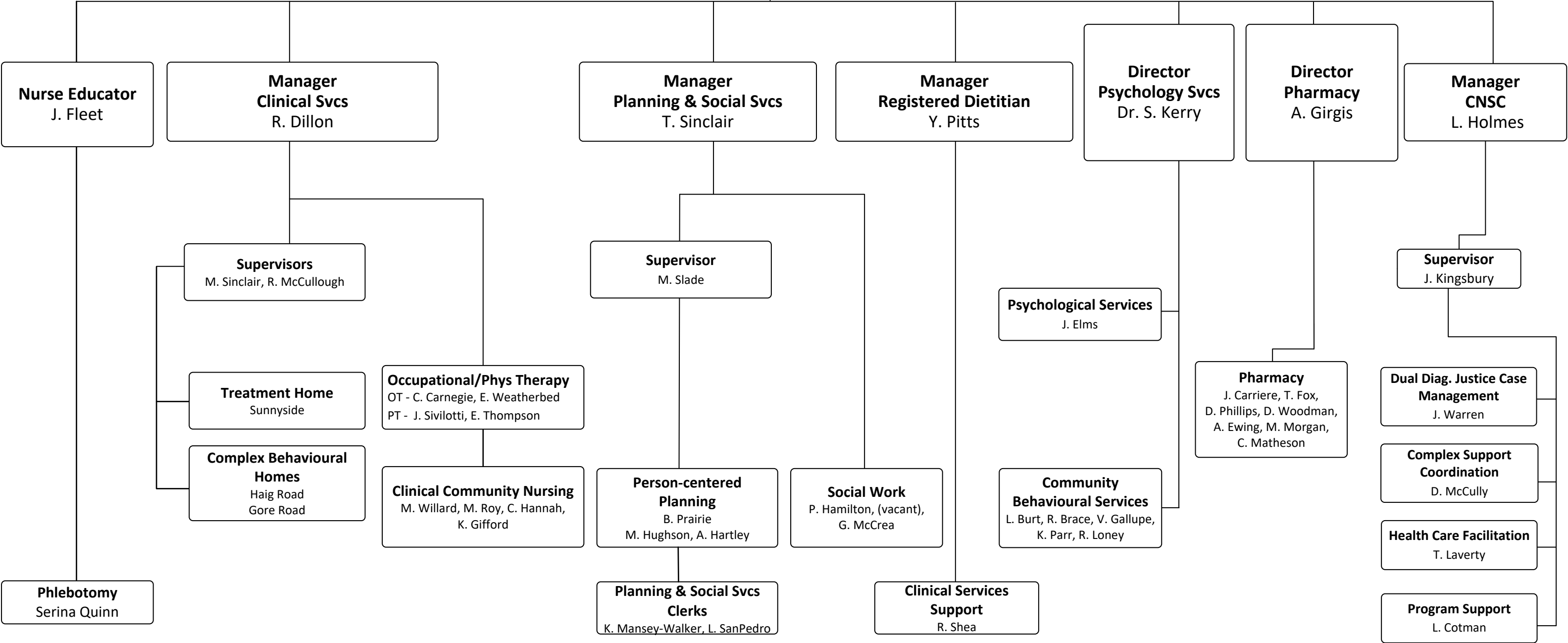
As of October 22, 2020

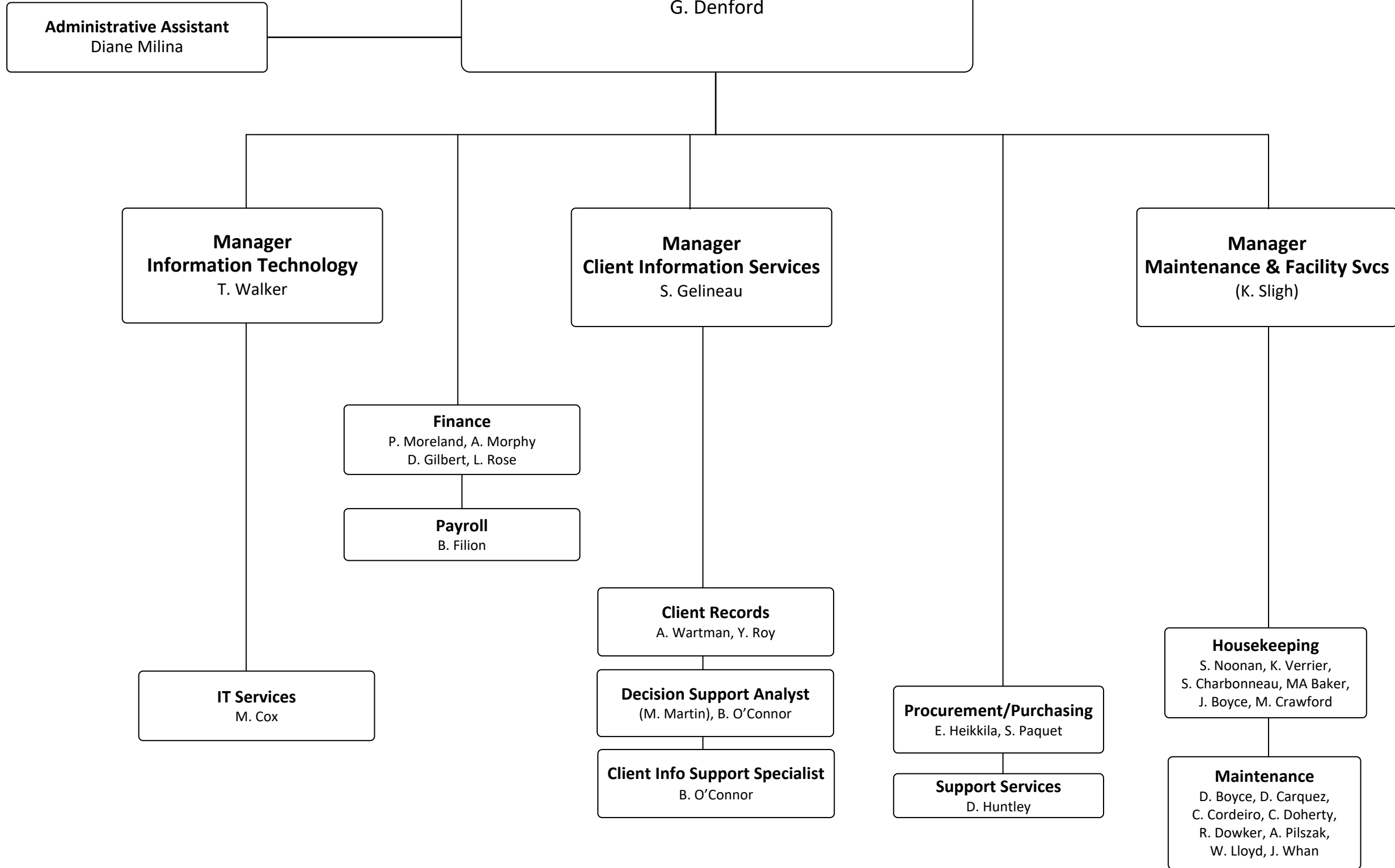




Chief Clinical & Planning Officer
K. Menzies

Administrative Support
Diane Milina







Chief Residential & Community Services Officer
C. Park

Administrative Support
C. Gillespie, R. Scott

Managers
Residential & Community Services
S. Augustyn, K. McCormick, A. Treadgold

Coordinator
Spiritual Care
M. Cook

Supervisors, Residential Services
L. Brewer
(J. Jackson)
H. Lochhead
M. MacPherson
B. Marlborough
W. Marshall-DeLonghi
D. McMullen
K. Walton

Supervisors, Community Services
L. Murray, J. Running,
H. Storms, B. Wannamaker

Host Family Supervisor, Host Family & Community Services
L. Johnson

After Hours Supervisors
MJ Campbell, T. O'Quinn,
L. Peters, L. Pitcher, T. Rawding,
C. Yates

Community Residences
Seaforth – Respite
Wilson - Respite
Grosvenor
Montreal S
Montreal N
James
Prince Charles
Cunningham
Douglas
Inverness
Mowat
Portsmouth
Richard
Church
Henry
Robinson
Baxter
Mulcaster
McKeown

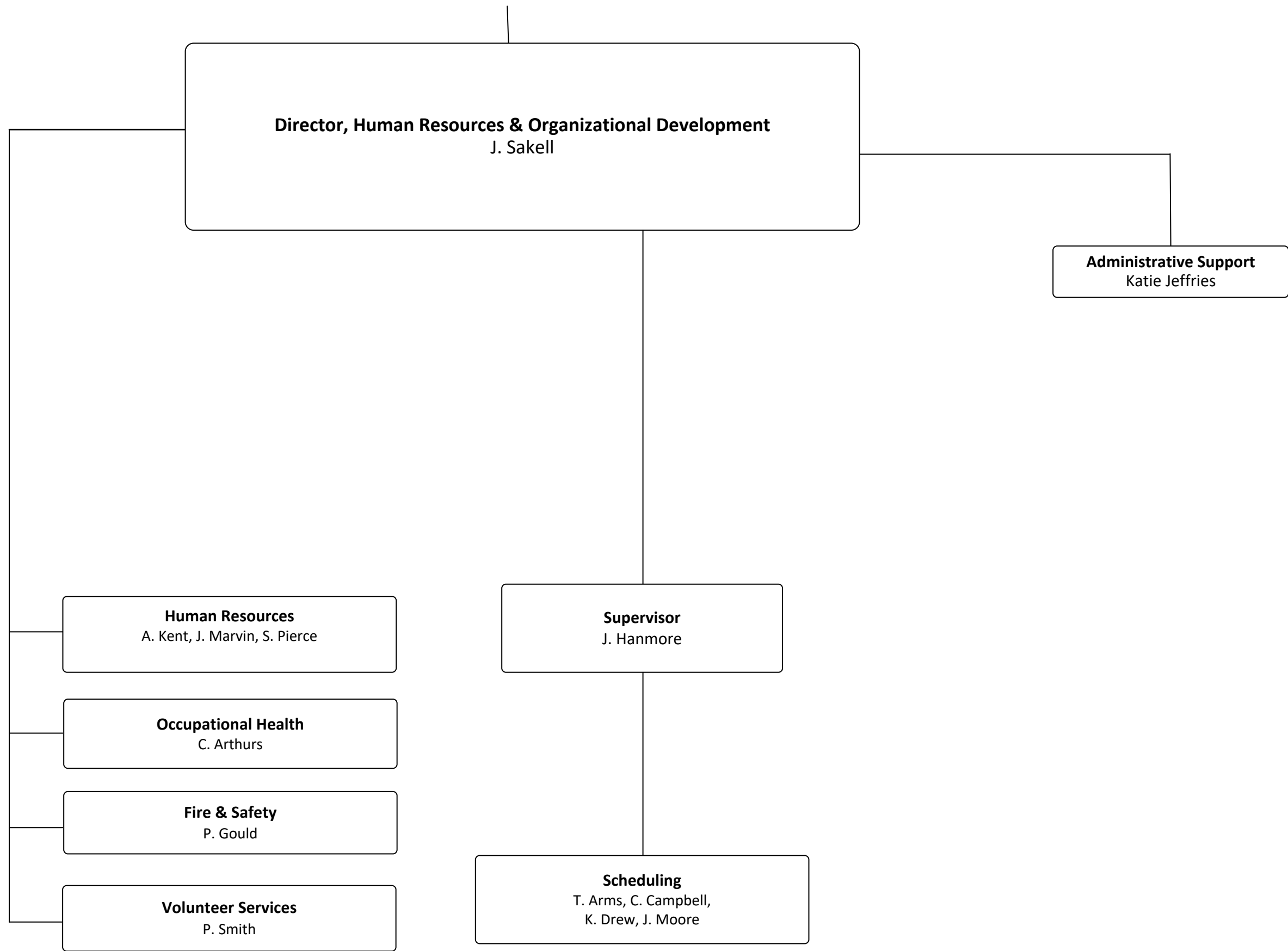
Nursing Residences
Barclay
Elizabeth

Community Service Programs

Host Family Program
(Community Case Workers)
K. Elliott, J. Morris, W. Nield,
D. Ruttan, L. Sanders,
M. Sherboneau, C. Wood

Hydrotherapy
ORC Day Program
Crescent Centre/STA
Balsam Grove

Adult Protective Services





Board of Governors

- President -** Jack Thompson
- Vice President -** Roy Smith
- Past President -** Allan Twohey
- Treasurer -** Michael Dominik
- Secretary/CEO -** Alastair Lamb
- Chief of Medical Staff -** Dr. Elizabeth Grier
 - David Ariss
 - Dwight Boyce
 - Carol Cartier
 - Randy Casford
 - Glen Cavanagh
 - Geoff McMullen
 - Kathy Pringle