



## MEMO

To: All Ongwanada Staff

From: Dina Eleslambouly

Date: December 9, 2024.

Re: Portfolio Realignment to Enhance Efficiency and Collaboration

---

Dear Colleagues,

As part of our ongoing efforts to strengthen our organizational effectiveness and deliver exceptional support to those we serve, we are excited to announce a strategic realignment of service delivery portfolios at the director level. This realignment is an important step toward enhancing efficiency, streamlining responsibilities, and fostering collaboration across teams.

**Effective Monday, December 9, 2024**, the following changes will take effect:

1. **Tanya Sinclair** will become the **Director of Supportive Living Services**. Tanya will oversee all service delivery in Supportive Group Living, Host Family, Supportive Independent Living, Out of Home Respite and Specialized Accommodations. This includes all managers, supervisors, and front-line staff within these areas.
2. **Jill McCreary** will become the **Director of Community & Specialized Services**. Jill will continue to lead Professional & Specialized Services and retain Community Participation Supports, with Lori Johnson, supervisors, and front-line staff remaining under her portfolio. Additionally, Service Coordination & Planning Services, Clinical Information Services and Quality & Operational Excellence will move under Jill's leadership.
3. **Cassandra Gillespie** will become the administrative assistant for Tanya Sinclair.
4. **Rachel Shea** will become the administrative assistant for Jill McCreary.
5. **Aaron De Sousa** will become the administrative assistant for Dina Eleslambouly.

Attached below, you will find an updated organizational chart reflecting these changes. We are confident that this realignment will position us for success by aligning expertise and responsibilities in a way that allows us to better meet the needs of our supported individuals and staff. We encourage you to approach Tanya or Jill directly with any questions or for further clarification. They are more than happy to support you as we transition into this new structure.

Thank you for your ongoing dedication and commitment to our mission. Together, we are taking meaningful steps to create a stronger, more effective organization.

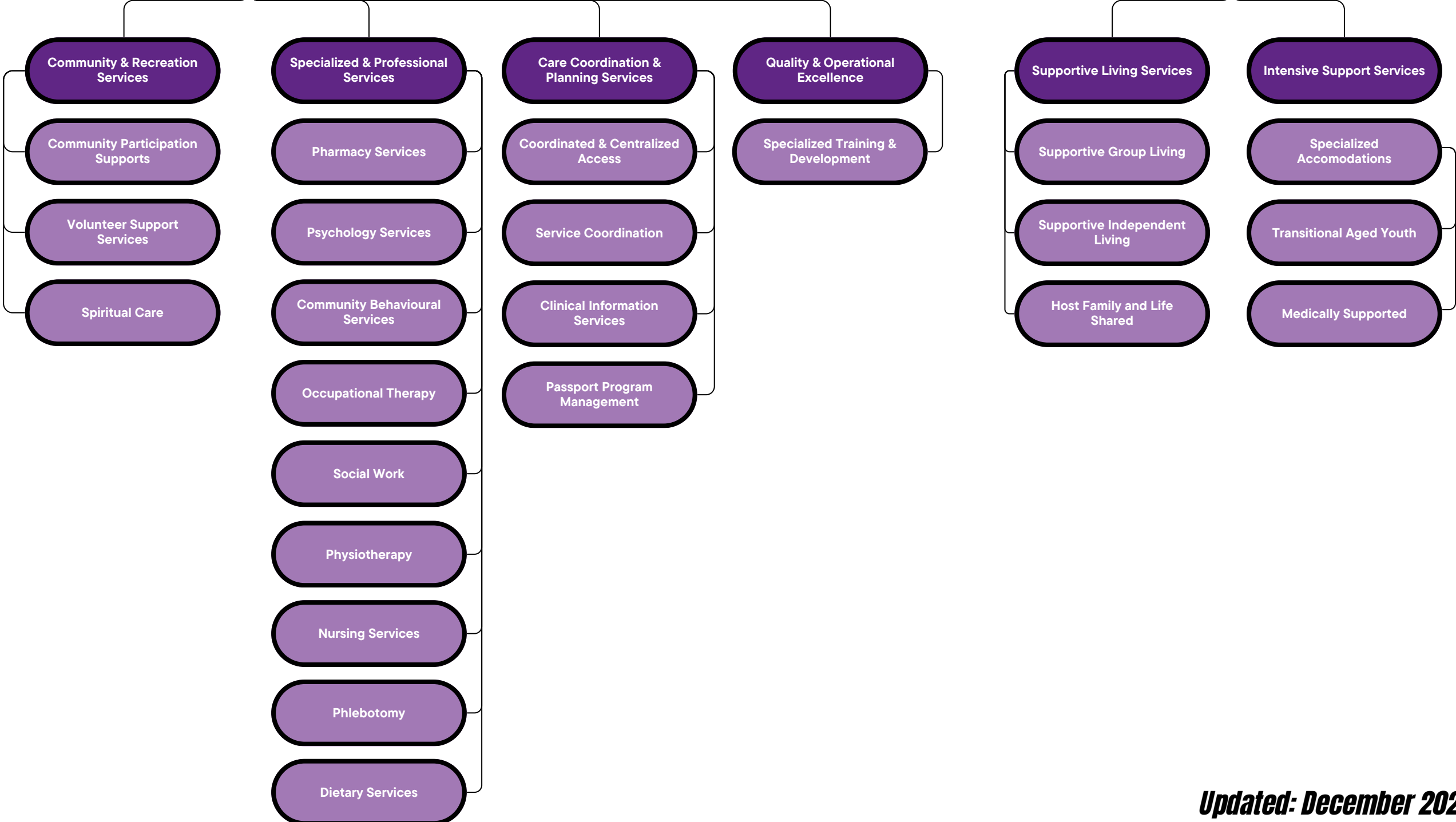
Best wishes,  
Dina Eleslambouly  
Chief Operating Officer

**Aaron De Sousa**  
Administrative Assistant

**Dina Eleslambouly**  
Chief Operating Officer

**Jill McCreary**  
Director of Community & Specialized Services

**Tanya Sinclair**  
Director of Supportive Living Services



**Dina Eleslambouly**  
Chief Operating Officer

**Rachel Shea**  
Administrative Assistant

**Jill McCreary**  
Director of Community & Specialized Services

